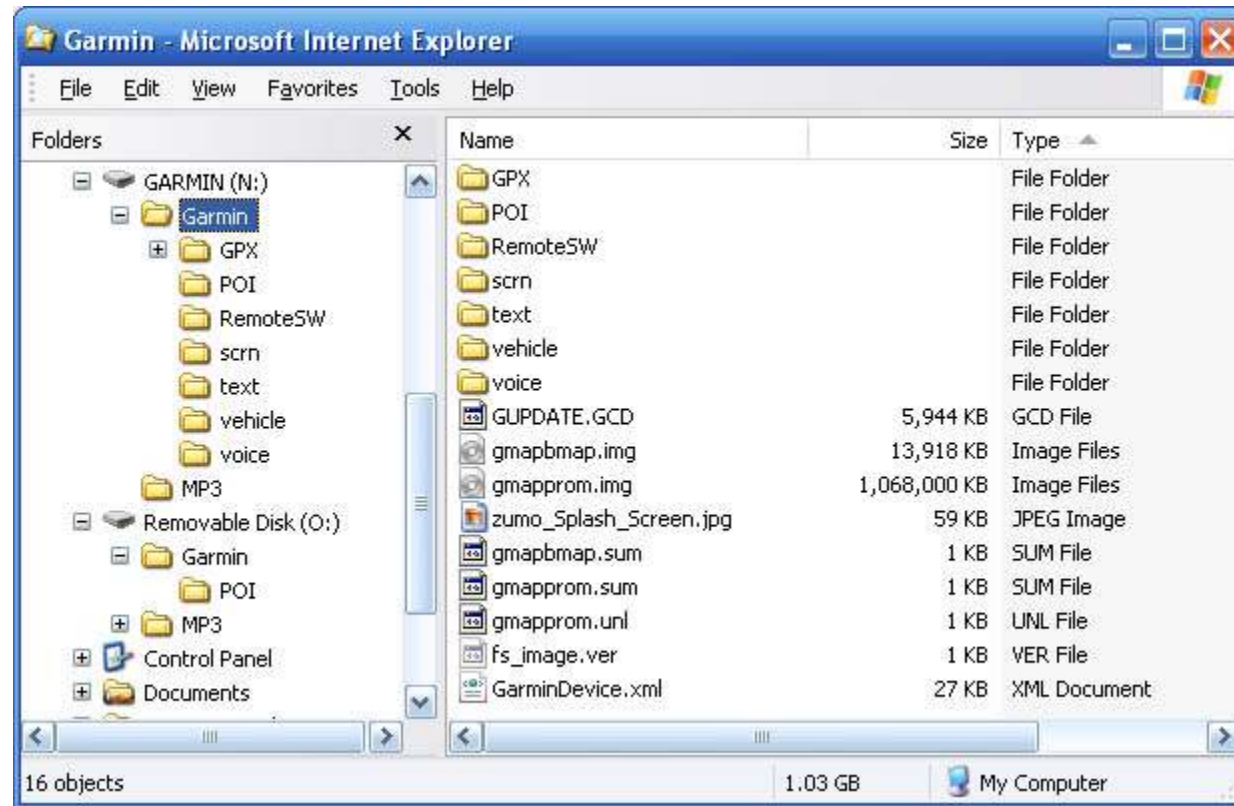


Description of files and folders:

Picture of the Zumo's file structure:



File / folder name	Description	Can you delete it's content?
GPX	Current.gpx = file created each time you connect your Zumo to USB. Stores all current loaded routes and waypoints in the Zumo. This file is send from the Zumo TO mapsource	Yes But only the archive will clear up useful space.

	Temp.gpx = file created that stores all routes and waypoints for connection from mapsource TO Zumo	Tip: When saving the Archive files on your hard disc, leave the one with the highest number, and save the rest. File numbering is then continued This prevents overwriting existing files on your HD.
JPG	Folder where pictures are stored Folder for Points of Interest: All data loaded with POI loader like speedcams etc.. Multiple filenames with .gpi extentions can be created.	Yes
POI	poi.gpi = all poi's that are loaded with POILOADER yourname.gpi = manually created and manually added poi files with your own selection (like poi's that do not change often like hotels) Cyclops.gpi = trial version of Garmins speedcams subscription.	Yes
RemoteSW	Folder where Bluetooth / TMC firmware updates are stored Filenames example: 006C008800.GCD andbin and sum	No
scrn	Screenshots pictures are stored here. Filenames: 2776.JPG (example. The numbering seems to be random) Additional language versions, text files. YourLanguage.gtt. = major translation file YourLanguage.Gdnc.gtt = additional translation tags (official) YourLanguage.Trf.gtt = Traffic info translations	Yes
text	YourLanguage_User.gtt = home made translations that add to or overwrites the the major file (see tips & tricks)	Yes, Just keep your own language file!! Deleting textfiles save up a lot of space Missing files can be restored with the Webupdater
userdata	If American English is selected, no major translation file is necessary since this language is embedded in the units firmware. Technical file	No
vehicle	Additional vehicles you can download as position cursor. Link to Garmin Garage Filenames = name.sfr	Yes
voice	Additional language versions, voice files. Filenames like: Afrikaans_.vmp are normal voices that do not speak streetnames Filenames like: Nederlands_Claire.vmp are TTS (text-to-speech) voices that do speak streetnames.. Note the "name" like John, Claire, etc..	Yes Just keep your own language file (TTS and/or normal version)

GUPDATE.GCD	Firmware Update file	No
gmapbmap.img	BASE MAP: Crude map with Major roads only covering a (large part) of the world	No, Unless you replace it with the world Routable Basemap (see Modifications). Or you delete a USA basemap while you are in the EU (or vice versa)
gmapprom.img	PRE-PROGRAMMED MAP: Most important mapsection, since this large file contains your detailed pre-loaded region.	No!
gmapsupp.img	Supplemental maps: All maps you add to the pre-loaded maps, like other regions or Topo maps are stored in this file	Yes
gmapoem.img	Additional mapfile found in branded zumo's like Honda & BMW. Contains waypoints of dealers etc.	Yes. Updates / restores only over the branded dealer network
gmapbmap.sum	unimportant help file	No
gmapprom.sum	unimportant help file	No
fs_image.ver	Technical file	No
GarminDevice.xml	Technical file	No
MP3	Music file. All music must be in the *.mp3 format. No other music formats are supported	Yes
Audible	The Audiobook folder Activation.dat = licence code for audiobook subscriptions *.aa = audiobook file format	Yes